

Plus Series

Improving thermal performance of buildings...

Product Overview

The Nudura Plus+ forms are engineered to address the growing industry demand for increased exterior insulation. Our plus series comes ready for installation and utilises all key benefits of our innovative design.

DURALOCK technology allows installers the ability to install faster and more efficiently. DURAMAX technology allows builders the advantage of placing the largest standard form in the ICF industry. DURAFOLD technology ships flat, reducing overall shipping costs, maximising storage space on-site, simply unfold and stack. The innovative reversible design, reduces waste on-site.

Nudura PLUS series is available in four sizes: 25mm, 51mm, 102mm and 152mm offering U-values as low as 0.12.

Features & Benefits

- Features Nudura's innovative patented technology
- Industries largest standard form on the market (2438mm)
- Comes ready for installation
- Available in a variety of sizes
- Access to full on-site technical support through an expert in-house team



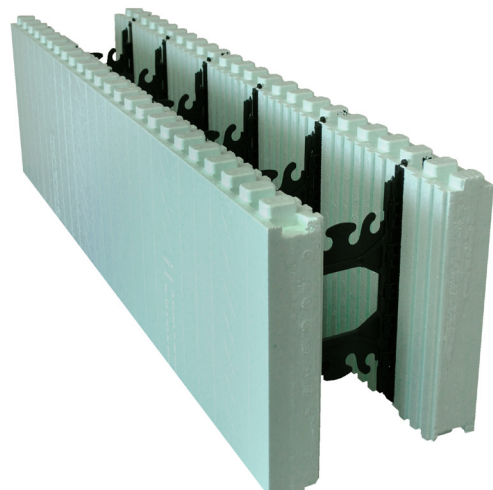
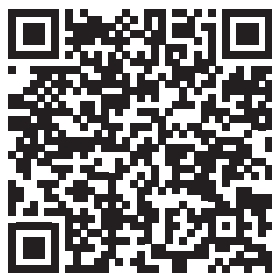
Faster build time

Simplified assembly

Sustainable solution

Our goals are simple, we are committed to provide customers with a high-quality solid wall insulated form work, that will work in reducing energy costs, and contribute to living in a much more sustainable, air quality controlled and comfortable living environment. When specifying and using Nudura on projects you can be assured that you are using the best modern method of construction solution available in the marketplace today.

Download our product guide here



Tremco CPG UK Limited
Coupland Road, Hindley Green
Wigan WN2 4HT UK

T. +44 1942 251400
F. +44 1942 251410
hello@cpg-europe.com
www.cpg-europe.com